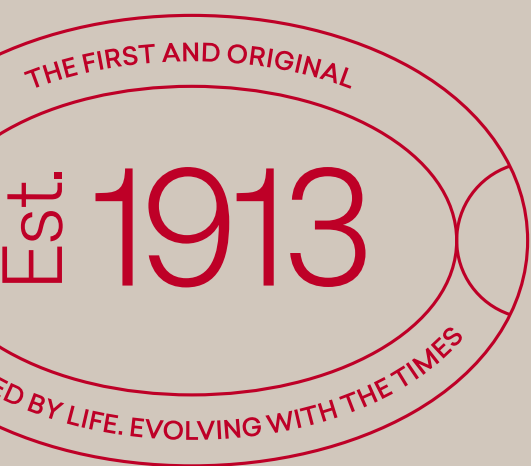


# Formica® Collection

## Patterns



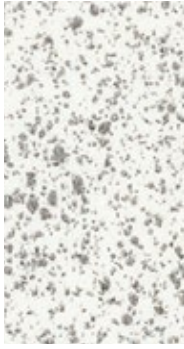
# Patterns



F0193  
Xenon MAT



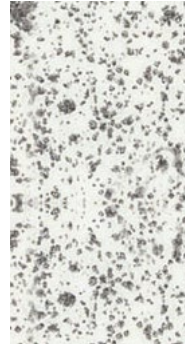
F0202  
Light Gauze MAT



F1330  
Calcium New MAT



F1782  
Stardust MAT



F1936  
Lava Dust MAT



F5270  
Geo White MAT



F5272  
Geo Folkestone MAT



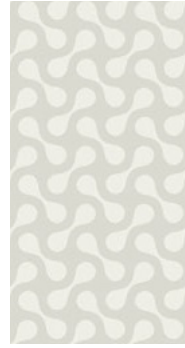
F5273  
Geo Citadel MAT



F5278  
Dogbone Earth MAT



F5279  
Dogbone Otter MAT



F5280  
Dogbone Grey MAT



F5281  
Dogbone White MAT



F5282  
Dogbone Black MAT



F5283  
Dogbone Storm MAT



F5583  
Steel Metal MAT



F5593  
Silver Metal MAT



F3735  
Krypton MAT



F1787  
Grey Dust MAT



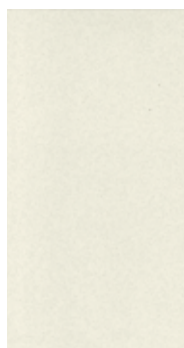
F6213  
Cherry Strand MAT



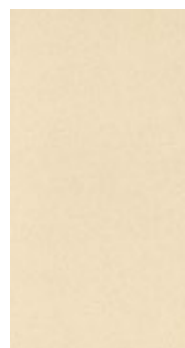
F6362  
Concrete Formwood AHD



F6363  
Elemental Ash AHD



F6698  
Paloma Polar MAT



F6723  
Paloma Almond MAT

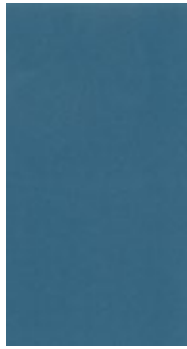


F6724  
Paloma Folkestone MAT

# Patterns



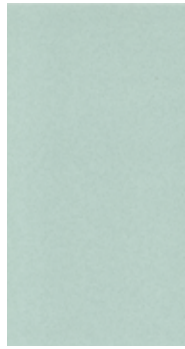
F6725 MAT  
Paloma Just Blue



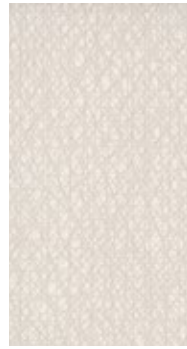
F6726 MAT  
Paloma Denim



F6727 MAT  
Paloma Just Rose



F6728 MAT  
Paloma Jade



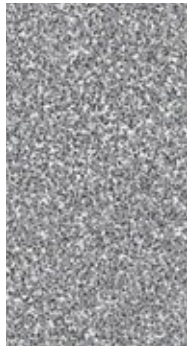
F6943 MAT  
VirrVarr White



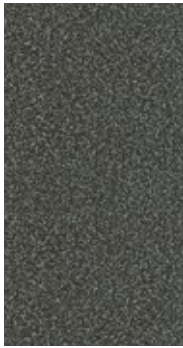
F6945 MAT  
VirrVarr Black



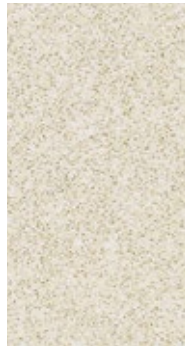
F7507 MAT  
Folkestone Grafix



F7508 MAT  
Mouse Grafix



F7515 MAT  
Graphite Grafix



F7517 MAT  
Almond Grafix



F7522 MAT  
Blue Silk Grafix



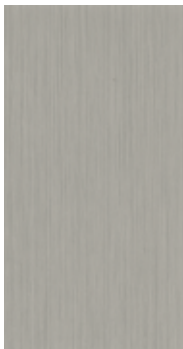
F7708 MAT  
Flax Gauze



F8814 PLX  
Denim Twill



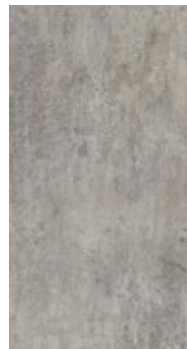
F8826 PLX  
Neutral Twill



F8827 PLX  
Sarum Twill



F8829 PLX  
Graphite Twill



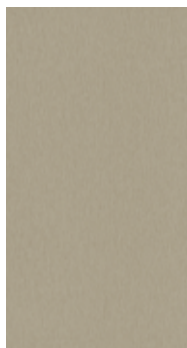
F8830 AHD  
Elemental Concrete



F8832 AHD  
Elemental Corten



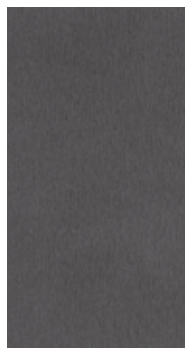
F8833 AHD  
Elemental Graphite



F8837 MAT  
Brushed Zinc



F8859 MAT  
Vintage Brush



F3734 MAT  
Radon

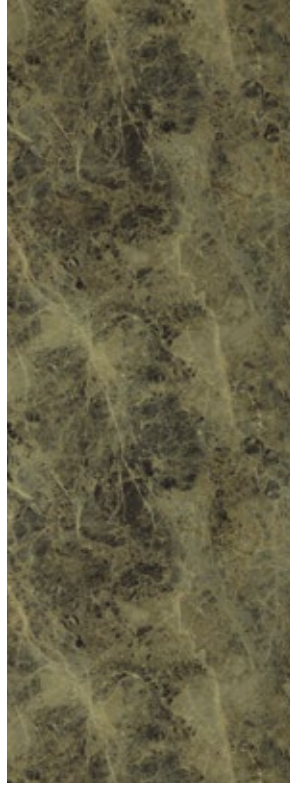


# TrueScale



F3420  
Dolce Vita

AB



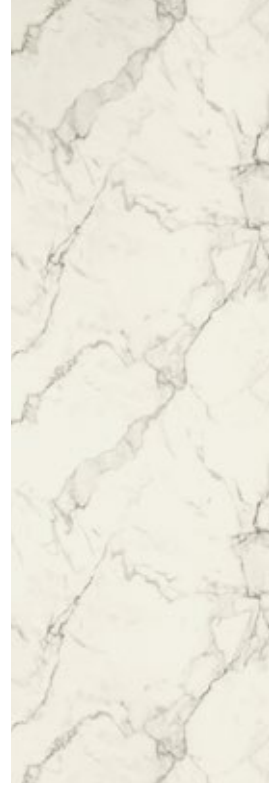
F3457  
Breccia Paradiso

AB



F3458  
Travertine Silver

AB



F3460  
Calacatta Marble

AB



F3462  
Slate Sequoia

AB



F3466  
Antique Mascarello

AB



F3467  
Blue Storm

AB



F3476  
Jet Sequoia

AB

# Frosted



F6350  
Frosted Dusk

AB



F6353  
Frosted Jade

AB



F6352  
Frosted Gold

AB



F6351  
Frosted Copper

AB

# Patterns

				Sheet size (mm)					
				3050x1300	3050x1300	2150x950	2350x950	2350x1300	3660x1525
Code	Décor	Range	Light Reflectance Value	Grade: PAR PAR CGS	Grade: HGP CGS	Grade: HGP CGS	Grade: HGS CGS	Grade: HGS CGS	Grade: HGP CGS
F6350	Frosted Dusk	Frosted	43.5	AB					
F6351	Frosted Copper	Frosted	26.5	AB					
F6352	Frosted Gold	Frosted	49.5	AB					
F6353	Frosted Jade	Frosted	38.5	AB					
F0193	Xenon	Patterns	47.2		MAT	MAT	MAT	MAT	MAT
F0202	Light Gauze	Patterns	64.6		MAT				
F1330	Calcium New	Patterns	67.7		MAT				
F1782	Stardust	Patterns	19.7		MAT				
F1787	Grey Dust	Patterns	37.0		MAT				
F1936	Lava Dust	Patterns	60.0		MAT				
F3734	Radon	Patterns	18.7		MAT	MAT	MAT	MAT	MAT
F3735	Krypton	Patterns	35.3		MAT	MAT	MAT	MAT	
F5270	Geo White	Patterns	69.1		MAT				
F5272	Geo Folkestone	Patterns	43.9		MAT				
F5273	Geo Citadel	Patterns	16.4		MAT				
F5278	Dogbone Earth	Patterns	19.8		MAT				
F5279	Dogbone Otter	Patterns	21.2		MAT				
F5280	Dogbone Grey	Patterns	69.7		MAT				
F5281	Dogbone White	Patterns	71.5		MAT				
F5282	Dogbone Black	Patterns	9.5		MAT				
F5283	Dogbone Storm	Patterns	11.0		MAT				
F5583	Steel Metal	Patterns	22.9		MAT	MAT	MAT	MAT	
F5593	Silver Metal	Patterns	53.8		MAT				
F6213	Cherry Strand	Patterns	26.8		MAT				
F6362	Concrete Formwood	Patterns	49.0		AHD				
F6363	Elemental Ash	Patterns	53.0		AHD				
F6698	Paloma Polar	Patterns	72.9		MAT				
F6723	Paloma Almond	Patterns	59.9		MAT				
F6724	Paloma Folkestone	Patterns	51.8		MAT				
F6725	Paloma Just Blue	Patterns	44.8		MAT				
F6726	Paloma Denim	Patterns	14.6		MAT				
F6727	Paloma Just Rose	Patterns	64.0		MAT				
F6728	Paloma Jade	Patterns	49.7		MAT				
F6943	VirrVarr White	Patterns	63.6		MAT				
F6945	VirrVarr Black	Patterns	16.7		MAT				
F7507	Folkestone Grafix	Patterns	53.7		MAT				
F7508	Mouse Grafix	Patterns	30.0		MAT				
F7515	Graphite Grafix	Patterns	11.9		MAT				
F7517	Almond Grafix	Patterns	62.3		MAT				
F7522	Blue Silk Grafix	Patterns	42.4		MAT				
F7708	Flax Gauze	Patterns	51.5		MAT				
F8814	Denim Twill	Patterns	11.5		PLX				
F8826	Neutral Twill	Patterns	58.8		PLX				
F8827	Sarum Twill	Patterns	35.1		PLX				PLX
F8829	Graphite Twill	Patterns	11.3		PLX				
F8830	Elemental Concrete	Patterns	38.5		AHD				
F8832	Elemental Corten	Patterns	13.8		AHD				
F8833	Elemental Graphite	Patterns	13.2		AHD				
F8837	Brushed Zinc	Patterns	37.0		MAT				
F8859	Vintage Brush	Patterns	25.0		MAT	MAT	MAT	MAT	
F3420	Dolce Vita	TrueScale	28.2	AB					
F3457	Breccia Paradiso	TrueScale	23.1	AB					
F3458	Travertine Silver	TrueScale	51.3	AB					
F3460	Calacatta Marble	TrueScale	63.8	AB					
F3462	Slate Sequoia	TrueScale	12.0	AB					
F3466	Antique Mascarello	TrueScale	23.7	AB					
F3467	Blue Storm	TrueScale	14.4	AB					
F3476	Jet Sequoia	TrueScale	8.6	AB					

# Product grades, finishes and accreditations

This Collection incorporates the following grades of decorative laminate each with its own performance characteristics. **These grades conform to EN438.**

## Formica® Laminate

Sheets (thin) consisting of layers of wood-based fibers impregnated with thermosetting resins and a surface décor on one side

**Grade:** HPL/EN438-3 HGP: Horizontal, General Purpose, Postforming high pressure decorative laminate  
HPL/EN438-3 HGS: Horizontal, General Purpose, Standard high pressure decorative laminate

**Thickness:** 0.7 mm (nominal), single sided

Additional flame retardant grades are available on request (please check for available options)

## Formica® Compact

Sheets (thick) consisting of layers of wood-based fibers impregnated with thermosetting resins and surface décor on one or both sides

**Grade:** HPL/EN438-4 CGS: Compact, General Purpose, Standard high pressure decorative laminate

**Thickness:** Single sided 2, 2.5, 3 mm/Double sided 4, 6, 8, 10, 12, 13, 16, 18, 20 mm

Additional flame retardant grades are available on request (please check for available options)

## AR Plus® by Formica Group

Durable high gloss laminate, with increased surface performance, highly resistant to scuffs and mar abrasions

**Grade:** PAR: Abrasion-resistant, High-gloss, Postforming high pressure laminate

**Thickness:** 1.2 mm (nominal), single sided

Additional flame retardant grades are available on request (please check for available options)

PAR grade classification does not appear in the EN438 grade classification system

## AR Plus® Compact by Formica Group

Sheets consisting of layers of wood-based fibers impregnated with thermosetting resins and a high gloss surface finish on one or both sides\*

**Grade:** PAR CGS: Abrasion-resistant, High-gloss, Compact, General Purpose, Standard high pressure decorative laminate

**Thickness:** Single sided 2, 2.5, 3 mm/Double sided 4, 6, 8, 10, 12, 13, 16 mm

Additional flame retardant grades are available on request (please check for available options)

PAR CGS grade classification does not appear in the EN438 grade classification system

Product data sheets, including applicable fire rating, can be accessed on [formica.info](http://formica.info)

### Available surface finishes and recommended applications

Surface Finish Description	Surface Finish Designation	Code	Recommended applications
			Horizontal (& Vertical), General purpose
AR Plus®	AB	AB	•
Honed*	AHD	77	•
Matte 58	MAT	58	•
Plex	PLX	PX	•

\*Limited availability of honed texture in compact grade laminate (please check for available options)

#### General

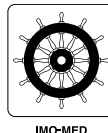
The information given in this brochure is correct at the time of publication. However, as we have a policy of constant product development and improvement, product specifications may change in the future. Visit [formica.com](http://formica.com), or [formica.info](http://formica.info) for technical data, as the most up-to-date source of information. Not all certifications stated are applicable or available for all Formica® products. Please check that the product you require is covered by a relevant certification or is suitable for your specific application, in advance of order placement. Formica Group is FSC® certified and complies with the requirements of FSC. Network of participating European Formica Group sites is shown on certificate number TT-COC 003588.

#### Light Reflectance Value

Light Reflectance Value (LRV) is a value indicating the proportion of light reflected by a colour, when measured under standard daylight conditions. This guidance uses a scale of 0-100, where 0 = black and therefore total light absorption, whereas white = 100 and therefore total light reflection. The main purpose of this value is to indicate measured colour contrast between two surfaces, which need to be readily distinguishable within an environment (under static conditions, a difference of 30 units between two colours is considered adequate). LRVs stated may or may not be exact and are provided for guidance only.

#### Please note

For non-solid colour decors, where there are multiple colours across the design, the stated LRV is an average value taken from multiple measurements across the décor and must be used with caution. The individual colours in a pattern, woodgrain or stone design can differ more than 30 LRV units within the design itself.



## The first and original

Formica Group invented high pressure laminates in 1913. Pioneers by definition, our iconic Formica® brand represents the quintessence of laminates.

## Inspired by life

Laminates entered people's daily lives and made modernity dreams come true and accessible. Similarly, the demand for multifunctional, practical and durable designed surfaces is a constant inspiration for our Formica® Collections. At rest, at leisure, at work.

## Evolving with the times

The way people live, work and play continuously changes. Formica Group keep pace with these evolving times through constant innovation, reflecting global trends and responding to ever changing needs and habits. The true original, still surfacing the world.



### Disclaimer

#### General

The information provided by Formica Group ("Formica") in this document is solely indicative. The information given in this brochure is correct at the time of publication. However, as we have a policy of constant product development and improvement, product specifications may change in the future. Visit [formica.com](http://formica.com), or [formica.info](http://formica.info) for technical data, as the most up-to-date source of information. Formica does not warrant that the information in this document is suitable for your specific purpose. Colour system notations represent the closest match available in the particular system. They may or may not be exact and are provided for guidance only. When exact colour information is required, please always refer to an actual laminate sample in the specified finish.

#### Liability

Formica is not liable (neither contractual nor non-contractual) for any damage arising from or related to the use of this document, except if and to the extent that such damage is the result of willful misconduct or gross negligence on the part of Formica and/or its management. The limitation of liability applies to all parties affiliated with Formica, including but not limited to its officers, directors, employees, affiliated enterprises, suppliers, distributors, agents, and representatives.

#### General Conditions

All sales of Formica® brand products are governed by the Formica General Terms and Conditions of Sale in effect at the time of sale and contained in every order acknowledgement and are available upon request.

#### Intellectual Property

All intellectual property rights and other rights regarding the content of this document (including logos, marks, text and photographs) are owned by Formica Group and/or its licensors.

Formica, the Formica Anvil Device and AR Plus are registered trademarks of The Diller Corporation.

© 2022 The Diller Corporation